

ANTIGRAV

DEHNFUGENFREIES VERARBEITEN
JOINT-FREE PROCESSING



SIBU | DESIGN



ANTIGRAV

Dehnfugenfreie, großflächige Gestaltungsmöglichkeiten durch die Stoß-an-Stoß Verklebung. ANTIGRAV Designplatten sind extrem leicht, formstabil und kompakt, wodurch eine einfache Handhabung garantiert wird.

Anpassung und Weiterverarbeitung mit handelsüblichen Schneidwerkzeugen.

Einfaches Nachjustieren durch Verklebung mit Silikon oder MS Polymer-Hybridkleber auf allen Untergründen.

SIBU DESIGN Wandpaneele auf innovativer Trägerplatte: dehnfugenfrei, extrem leicht, formstabil!

Expansion joint-free, large-area design options thanks to the seamless bonding.

ANTIGRAV design sheets are extremely light, dimensionally stable and compact, which guarantees easy handling.

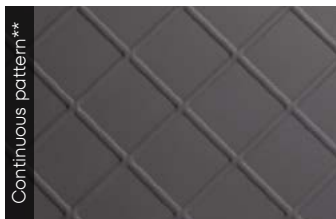
Adaptation and further processing with standard cutting tools.

Easy readjustment by gluing with silicone or MS polymer hybrid adhesive on all surfaces.

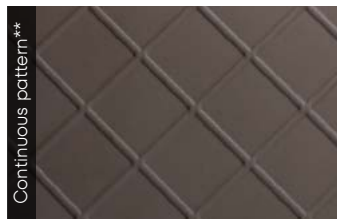
SIBU DESIGN wall panels on an innovative carrier plate: no expansion gaps, extremely light, dimensionally stable!

ANTIGRAV COLLECTION

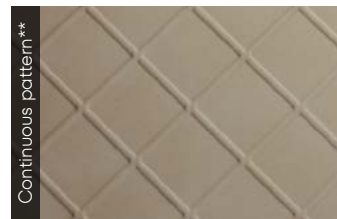
Lagerprogramm ab einer Platte erhältlich / Stock program available from one sheet.



LL CORD Charcoal Light Antigrav*
2600 x 1000 / 6,2 / NA 19764



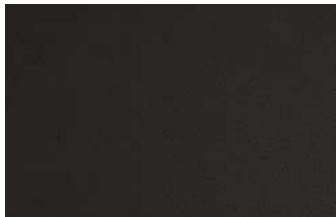
LL CORD Dove Tale Antigrav*
2600 x 1000 / 6,2 / NA 19765



LL CORD Stony Ground Antigrav*
2600 x 1000 / 6,2 / NA 19766



LL Stony Ground Antigrav
2600 x 1000 / 3,8 / NA 19794



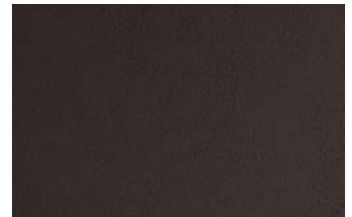
LL Charcoal Dark Antigrav
2600 x 1000 / 3,8 / NA 19762



LL Charcoal Light Antigrav
2600 x 1000 / 3,8 / NA 19763



LL Dove Tale Antigrav
2600 x 1000 / 3,8 / NA 19769



LL London Clay Antigrav
2600 x 1000 / 3,8 / NA 19782



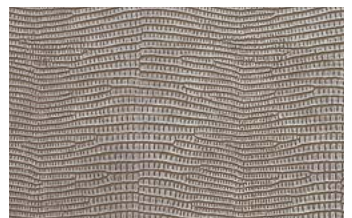
LL LEGUAN Nero Antigrav
2600 x 1000 / 3,4 / NA 19779



LL LEGUAN Copper Antigrav
2600 x 1000 / 3,4 / NA 19777



LL LEGUAN Gold Antigrav
2600 x 1000 / 3,4 / NA 19778



LL LEGUAN Silver Antigrav
2600 x 1000 / 3,4 / NA 19781



LL LEGUAN Bianco Antigrav
2600 x 1000 / 3,4 / NA 19775



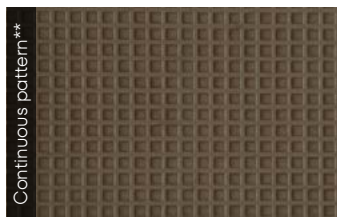
FL CUBE VELVET Bordeaux Antigrav*
2613 x 1005 / 6,0 / NA 22739



FL CUBE VELVET Pearl Antigrav*
2613 x 1005 / 6,0 / NA 22740



FL SQUARE 2 VELVET Coal Antigrav*
2613 x 1005 / 6,0 / NA 22734



FL SQUARE 2 VELVET Mocha Antigrav*
2613 x 1005 / 6,0 / NA 22733



FL COMB VELVET Curry Antigrav*
2613 x 1005 / 6,0 / NA 22731



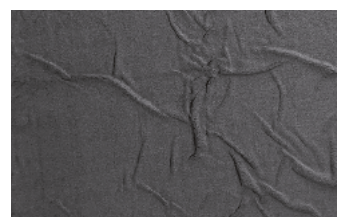
FL COMB VELVET Pearl Antigrav*
2613 x 1005 / 6,0 / NA 22732



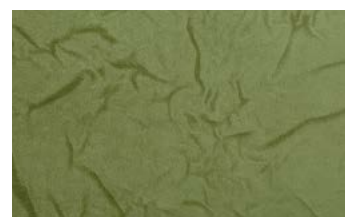
FL LAVA VELVET Coal Antigrav*
2613 x 1005 / 6,0 / NA 22737



FL LAVA VELVET Volcano Antigrav*
2613 x 1005 / 6,0 / NA 22738



FL CREPA VELVET Volcano Antigrav*
2613 x 1005 / 6,0 / NA 22736



FL CREPA VELVET Avocado Antigrav*
2613 x 1005 / 6,0 / NA 22735

* Weitere Farben möglich / * Additional colours possible

** Fortlaufendes Design / ** Continuous pattern



DM CEMENT Dark Antigrav
2600 x 1000 / 3,3 / **NA** 19798



DM CEMENT Light Antigrav
2600 x 1000 / 3,1 / **NA** 19563



DM MARBLE White Antigrav
2600 x 1000 / 3,1 / **NA** 19566



DM CONCRETE Grey AR Antigrav
2600 x 1000 / 3,3 / **NA** 22829



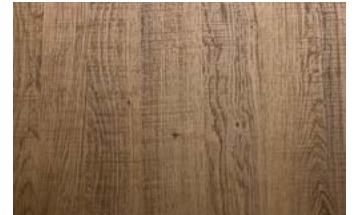
WL Carbonized Wood Antigrav
2600 x 1000 / 3,3 / **NA** 20158



WL Nutwood Antigrav
2600 x 1000 / 3,3 / **NA** 19568



WL Nutwood Country Antigrav
2600 x 1000 / 3,3 / **NA** 19569



WL Sessile OAK Antigrav
2600 x 1000 / 3,3 / **NA** 22785



WL Maple Alpine Antigrav
2600 x 1000 / 3,3 / **NA** 19570



WL OAK TREE Light Antigrav
2600 x 1000 / 3,1 / **NA** 19561

NA Nicht klebend
Non-adhesive

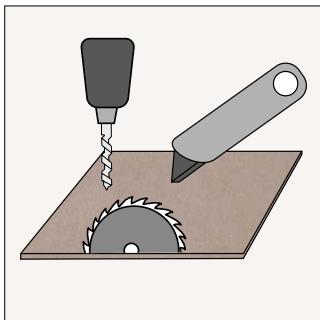
i Detailliertere Infos dazu finden Sie im OVERVIEW und auf www.sibu.at
More detailed information in our OVERVIEW and on www.sibu.at



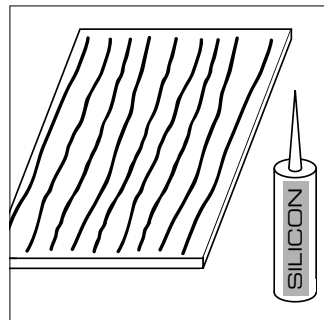


□ WL Sessile OAK Antigrav

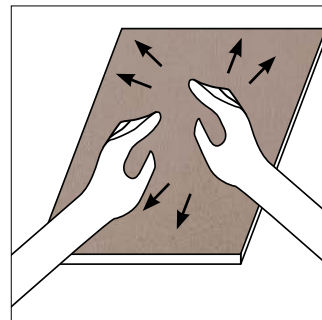
□ DM MARBLE White Antigrav



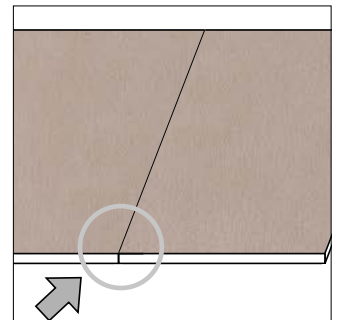
Die Bearbeitung erfolgt immer von der Dekoroberfläche.
Processing to be executed from the patterned side.



Silikonraupen vertikal auftragen (1cm vom Rand entfernt und 6cm Abstand zwischen den einzelnen Silikonraupen)
Apply beads of silicone vertically (1cm from the edge and with 6cm-spaces between the individual beads).



Platte auf der Wand fixieren und einrichten.
Press the sheet onto the wall and then adjust it.



Stoß-an-Stoß-Verklebung = 0mm Dehnfuge
Seamless bonding = 0mm expansion joint



SIBU | DESIGN

SIBU DESIGN GmbH & Co KG
Jupiterstraße 8 / 4452 Ternberg / Austria
T: +43 (0) 7256.6025.0 / info@sibu.at / www.sibu.at

